

THE TWENTY-FOURTH
ANNUAL TOURNAMENT

of the

Montana Bowling
Association



Falls Alleys

GREAT FALLS, MONTANA

April 8 to 23, 1939



Welcome
to
MONTANA
BOWLERS

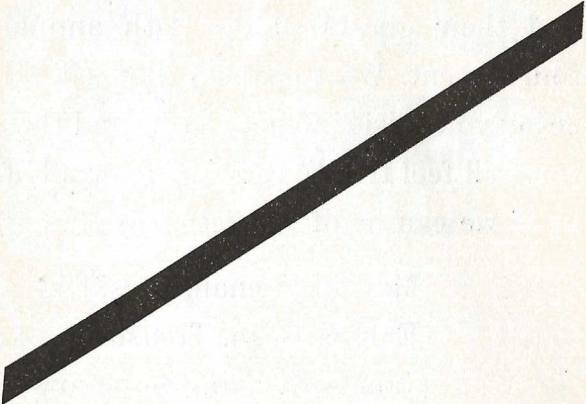
You Are Invited to Visit
Our Plants and the
A. C. M. Club During
Your Stay in Great Falls

**Anaconda Copper Mining
Company**

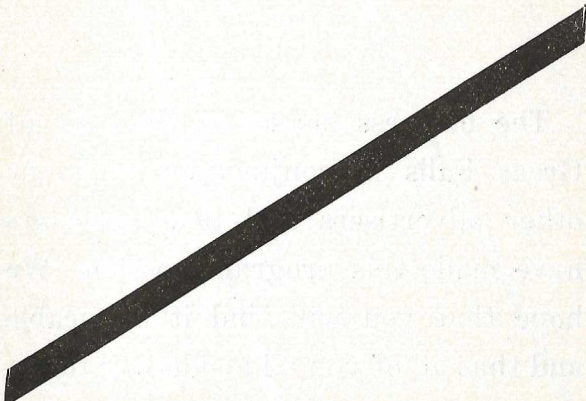
**Anaconda Wire and Cable
Company**

Great Falls Departments

ELECTRICITY



Your Faithful Servant
Ever Responding to the
Touch of a Button.



**The
Montana Power Company**

The Great Falls City Bowling Association is happy to join with the officers and members of the Montana Bowling Association in welcoming the bowlers and their guests to the 24th annual tournament. We hope that you will all enjoy your visit in Great Falls and that you will feel free to call on any or all of us if we can be of service to you.

Marvin Keenan, President
Earl Keenan, Treasurer
James Keenan, Secretary



The business houses of the City of Great Falls in conjunction with the other advertisers and team sponsors have made this program possible. We hope that you will find it servicable and that all of you will endeavor to express your appreciation.

**Remember Bowling Advertisers and
Sponsors**



GREAT FALLS BEER

*strikes
the
spot*



*on tap
and in steinies*

Officers of the
Montana Bowling Association

1939

RALPH CONRAD, Helena, President
H. G. SATTERTHWAITE, Great Falls, Vice-Pres.
A. W. MERKLE, Butte, Delegate at Large
K. J. BLACK, Great Falls, Honorary Secretary
WAYMAN J. WILLIAMS, Great Falls, Permanent Secretary-Treasurer
AVARD SYMES, Great Falls, Ass't. Sec.

**The Montana Bowling Association's
1939**

Annual Tournament

Is sanctioned and conducted in accordance with
the rules of the
AMERICAN BOWLING CONGRESS

- Stop at -

SUHR MOTOR COMPANY

13 Fifth Street South, Great Falls, Montana

**For Every Service You Need on Your
Automobile!**

100 Car Storage Capacity

**28 Courteous People to Look After Your
Needs—Quick, Expert, Dependable Service**

**40 Late Model Reconditioned Used Cars to
Choose From and Complete Stock of New
1939 BUICKS—All Colors—All Models**

SUHR MOTOR COMPANY

Buick Sales and Service

13 Fifth Street South, Great Falls, Montana

ATTENTION

There has been a constant growth of bowling in Montana. Along with this growth there has been a steadily increasing demand for more adequate and more modern bowling facilities. This demand has been readily met by a group of business men who have seen the future of bowling in this territory. They have not only supplied the demand but they have built with an idea that in the future there will be an ever increasing demand for their equipment. It is to the builders of the bowling game that we dedicate this section. As the owners and managers move forward they may be assured that we, too, will endeavor to promote bowling, the most healthful of all sports.

You, too, should

Bowl For Your Health

A. C. M. Club

Great Falls

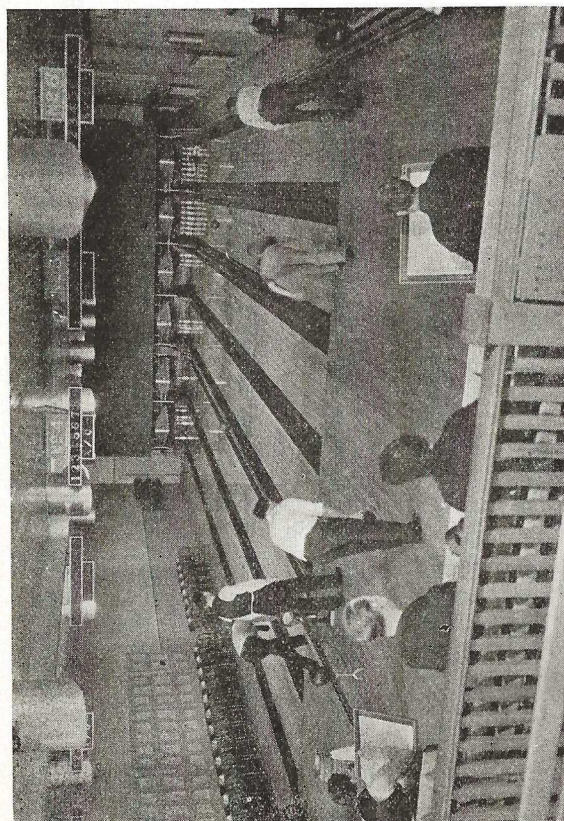


OFFICERS

R. H. TOWNSEND, Manager
F. W. SWITZER, Sec'y-Treas.

EXECUTIVE COMMITTEE

R. H. Miller, Chairman
R. J. Kennard
H. G. Satterthwaite
M. A. Jackson
J. C. Morrisette
R. H. Townsend
George Toole
F. W. Switzer



1919

1939

The A. C. M. CLUB

Roster

Bowling Alleys

6 Alleys—Spectator Capacity 300

Golf Course

9 Holes—Grass Fairways—Club House

Tennis Courts

2 Hard Surfaced Enclosed Courts

Horse Shoe Courts

2 Regulation Indoor Courts

Target Range

Two 50-ft. Indoor Ranges

Pool — Billiards — Ping Pong

Card Room — Reading Room

Circulating Library

Banquet Room — Kitchen

Commissary

The A. C. M. Club welcomes you to Great Falls and to the Montana Bowling Association Tournament. It also invites you to visit the Club House and to use the facilities available.



Arcade Alleys

ROUNDUP

E. C. (Dick) Goodenbour

TEAMS

The Arcade

Bair-Collins Coal

Bungalow Cafe

Neitzel's

Eddy's Bakery

Conoco

Miners and Merchants Bank

Arcade Alleys

Tupper's Ranch

Picchioni Grocery

Howry's Wrecking Co.

Old Timers

Welcome Bowlers
and
your guests
to the City of Great Falls

One of the
Leading Tournament Cities of the West

We hope you'll enjoy your visit
in addition to bowling big scores
and otherwise taking advantage
of the facilities of our city.

The Great Falls Chamber of
Commerce

Meet Your Fellow Bowlers

at the

**PENNANT
Cigar Store**

Your Favorite Beers and Cocktails

Dick Fries

Frank Longway

the Citizens of Great Falls:

I wish to take this opportunity to express my appreciation for the fine cooperation which we have received in the promotion of our 24th Annual Tournament. In each year of our existence as an organization we have been able to make improvements which have proven most beneficial to all concerned. This year marks another milestone in our march of progress.



Ralph Conrad
President

RALPH CONRAD

To Lady Bowlers

SAPPHIRE FLOUR

Works as easily in your kitchen
as balls roll down an alley

Don't Fail to Return for the Great

NORTH MONTANA STATE FAIR And RODEO

at Great Falls

August 7-12, 1939

The Northwest's Biggest Fair

Drink Schlitz

The Beer That Made Milwaukee
Famous

Devine & Asselstine, Distrs.
Offer Awards

Best Straightaway Team Score	5 cs Schlitz Beer
Best Straightaway Doubles Score	2 cs Schlitz Beer
Best Straightaway Singles Score	1 cs Schlitz Beer
Best Booster Team Score	5 cs Schlitz Beer
Best Booster Doubles Score	2 cs Schlitz Beer
Best Booster Singles Score	1 cs Schlitz Beer



BABCOCK BOWLING ALLEYS

C. H. "Chat" Chatwood, Manager

Babcock Building

BILLINGS

MONTANA

7 A. B. C. Sanctioned Alleys

78 League Teams

48 Men's Teams

30 Women's Teams

HANK'S

Do Not Be Misled
Our

Grizzly Gasoline

Is Better Than Our
Grizzly Bowling Team

THE BOWLER'S LAMENT

Oh, how I miss you tonite, Louie
More than you'll ever know
I make believe for awhile
Hiding each blow with a smile
But my heart won't stop aching
Please keep my hook from breaking
Oh, Louie, how I miss you tonite.

NICK'S PLACE

For a Good Glass of Beer or Bar Drinks
Black Eagle

TOP-NOTCH LUNCH

713 Central
Try our Ground Round Steak Hamburgers and
Home Cooked Meals
WE NEVER CLOSE

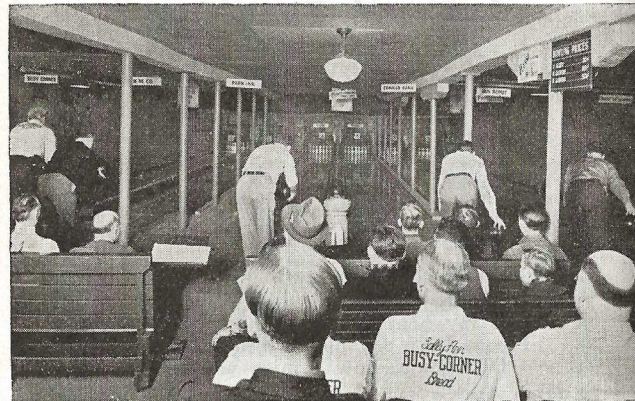
DRS. ARMOND, DIESTLER, HUSTED & HUSTED

OSTEOPATHIC PHYSICIANS
222-232-234 Ford Building
Great Falls, Montana

Kalispell Recreational Center

KALISPELL, MONTANA

Waller A. Ryder, Owner



Located in the trade center of Flathead Valley and Glacier National Park

6 Regulation Drives

Are at your service throughout the year

TEAMS PLAYING

American Legion
Kalispell Mercantile Co.
Park Inn
Bus Depot
Glacier Club
Amateurs
Safeway Stores
The New Stockholm
Eagles Lodge
Hilanders
Kalispell Grocery Co.
Brusts Dry Cleaners
Kirkpatrick Bros.
Glacier Dairy
Mountain States Power Co.
Best of the Wurst
Knights of Columbus
Lightening Gas
Shop Rite Grocery
Busy Corner
Gang Busters
Oasis
Chets

LADIES' TEAMS

Half Moon
Happy Five
Wilson's Cafe
Gutter Club

Kalispell Recreational Center

KALISPELL, MONTANA

Waller A. Ryder, Owner

Central Bowling Alleys

Helena, Montana

Jim Edwards, Manager

Modern Equipment in a Central Location



TEAMS

Lions Club	Texaco
Fabatz Bar	Brady's Cafe
Art's Delivery	Rialto Bar
Knapp Service	Helena Hardware
Bosslers Clothing	Eagles
Kessler's Beer	Great Falls Beer
Silver Dollar	Broadwater Inn
Sheehan's Coca-Cola	K. of C. No. 1
Linder-Kind Lumber Co.	K. of C. No. 2
Paul Knapp	K. of C. No. 3
Power Block	K. of C. No. 4
Capitol Motors	K. of C. No. 5
Allen Electric	Anderson Motors
Palmquist Electric	6 team Montana Power League
Rialto Cons.	12 team Ladies' League,
Helena Street Dept.	as follows:
Union Bank	Opp & Conrad
First National Bank	Pepper Box
Federal Reserve Bank No. 1	State Nursery
Federal Reserve Bank No. 2	Eddy Cafe
Hennessy's Grocery	Eddy Bakery
Nash-Finch	Old Plantation
A. A. Garage	Goody Shop
T. B. Miller Insurance	Rialto
Higgins	Cooks and Waiters
Hofbrau	Taylor Taxi
Anderson's Clothing	Broadwater Inn
Telephone Company	Hofbrau
Elks Club	

Greetings

from

The First National Bank

The Great Falls
National Bank

Montana Bank and
Trust Co.

Members of
GREAT FALLS CLEARING HOUSE
ASSOCIATION
and
MEMBERS FEDERAL DEPOSIT
INSURANCE CORPORATION

**AMERICAN
ROYAL
BOURBON
FOR
A
GOOD SHOT**

THE CALIFORNIA COMPANY

Marketers of Petroleum Products

Calso Gasoline

RPM Oil

Sold by

Ludwig Garage

WHOLESALE DEALERS

Storage

Tires

Repairs

Dean & Austin Service

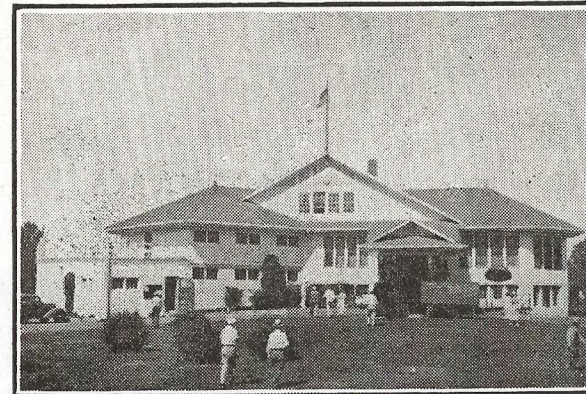
1½ Blocks East of Falls Alleys

Town's Fastest Service

Phone 3491

THE CALIFORNIA COMPANY

Marketers of Petroleum Products



Club House, Meadow Lark Country Club, Great Falls

Start Making Your Plans to Attend the
Annual

**Montana State
Golf Tournament**

July 18-23, 1939

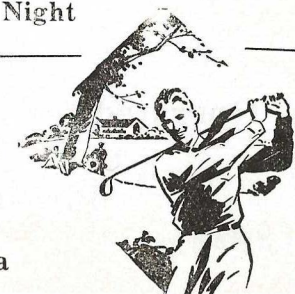
at the

Meadow Lark Country Club

18 Hole Irrigated Golf Course

The Club will be your
good time Headquarters

- Largest Club House in the state
- Tennis courts equipped with flood lights
- Swimming Pool
- Dancing Every Night



**Meadow Lark
Country Club**

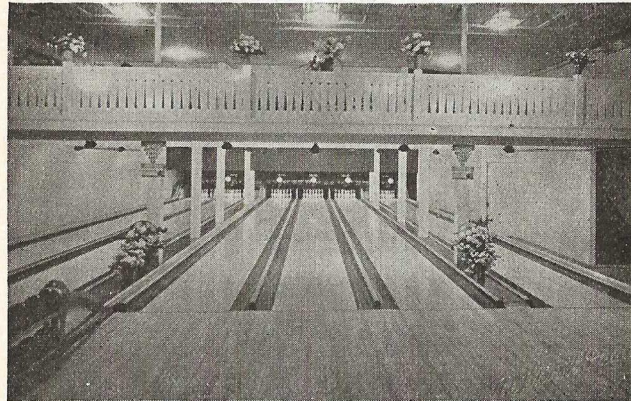
Great Falls, Montana

Your Bowling Alleys

116 First Street

Havre, Montana

H. H. Ray, Manager



New Standard Equipment

6 Regulation A. B. C. Drives

**Operated for the Bowler's
Pleasure**

HAVRE LEAGUE

Buttrey's	Luckies
Great Falls Beer	Teachers
Post Office	Coca-Cola
Oxford	Bill and Terry
Kiwanis Club	The Hub
Rotary Club	Texaco
Lions Club	Rainbow
B. A. R. E.	Your Alleys
Havre Fire Department	Clack's
Montana Power Co.	Havre Electric
Grand Hotel	Eddy's Bakery
Immigration	Nelson Furniture

HAVRE HANDICAP LEAGUE NO. 2

Milk River Motors	Standard Oil
Rainbow	Lumbermen
Pill Rollers	Havre Steam Laundry

HAVRE STRAIGHTAWAY LEAGUE

Oxford	Nelson Furniture
Grand Hotel	Consolidated Freight
Your Alleys	Lines
Rainbow	Eddy's Bakery
Black's Transfer	

HAVRE WOMEN'S LEAGUE

Great Falls Beer	Rainbow
Norge Rollators	Jacoby's
Your Alleys	Magic Chef
Havre Hotel	Luckies

Your Bowling Alleys

116 First Street

Havre, Montana



FALLS ALLEYS

GREAT FALLS

12 DRIVES

The House of
Recreation

BOWL FOR HEALTH

W. J. TOY, Manager

LEAGUES

STRAIGHTAWAY

Nick's Place
Johnson Hotel
Pennant Cigar
A. C. M. No. 1
Bart's Place
Great Falls Breweries
Palagi Sheriff
A. C. M. No. 2

Falls Alleys
Pure Milk Co.
Montana Power Co.
Club Cafeteria
Canyon Bar
A. C. M. No. 3
Maverick Bar
Park Hotel

COMMERCIAL LEAGUE

A League
Standard Furniture
Falls Alleys
Sally Ann Bakery
National Laundry No. 1
Dairy Dell
Civitans
Scotch Woolen Mills
Eddy's Bakery
Montana Bar
McIntosh Tailors
Coca-Cola
Silver Gas

B League
Matteuccis
G. F. Townsite
G. F. Beer
Pennant Cigar
Brass Rail
Kessler Beer
White Spot
Beckman Furs
Volk Beer
Noble Merc.
Rainbow Hams
Oasis Nite Club

C League
No. Life Insurance Co.
Hub Clothing
Tribune
Big Six Barbers
Moose Lodge
National Laundry No. 2
Setterstedts
Kaufman's Clothing
Montana Flour Mills
Hank's Grizzly Gas
G. F. Transfer
Kiwanis Club

D League
Montgomery Ward
Goodman's Smoke
S. & B. Grocery
Moon Agency
Palmquist Electric
Idowell Creamery
Home Oil
Dr. Selnors Glasses
Paris Fountain
Land-O-Nod
Bertsche's Food
Eneboe Motor Service

Handicap League
Hudson Motors
G. F. Iron Works
Maytag Washers
Royal Milling Co.

Geo. G. Mills Co.
Elks Club
Home Oil
Postoffice
Firestone

WOMEN'S CITY BOWLING LEAGUE

"A" LEAGUE
Pennant
Coca-Cola
George's Place
Dr. Pepper
Conoco
Sapphire Flour
Occidental Life
Kessler Beer
Victory Self Service
A. C. M.
Great Falls Brewery
Palagi Sheriffs

"B" LEAGUE
Steller's Jewelers
Volk Brewery
Grogan-Robinson
Great Falls Cafe
A. O. U. W.
Byrne-O'Neill
Bertsche's
Great Falls Brewery No. 2
The Paris
Eddy's Pan Dandy
Silver Gas
Jockey Club

MONTANA POWER LEAGUE

Volta No. 1
Volta No. 2
Office Operating
General Shop

Office Stars
Rainbow No. 2
Morony
Substation

JOCKEY CLUB LEAGUE

Know Your Jockeys by Their Bowling

No. 1
Roy Johnson
Walt Toy
Dr. Hitchcock
Bill Faust
Earl Vance
Percy Medlin
George Mehl
Ori DeSchon

Willard Lundell
Jim Ely
Ben Trerise
Col. Charles Sheridan
Walt Ignatius
Ralph Bricker
Clyde Baldwin
Vic Gibson

No. 2
Earl Monroe
Dr. L. F. Holzberger
Charles E. Stahleker
Dr. G. C. Gutchell

Dr. R. J. Holzberger
R. K. West
Jack Phelan
Ted Cooper
Paul Freeman

The High School Faculty League was organized to settle all bowling arguments at the High School.

Horn Team
Perry Team

Smith Team
Scovil Team

GREAT NORTHERN BOWLING LEAGUE

Shop Office
Rallettes
Apprentices
Freight Traffic

I. A. M. 287
Supervisors
Store Dept.
Blacksmiths

The Strand Bowling Centre

Livingston, Montana



E. H. Sherer, Proprietor and Manager

SIX MODERN BOWLING ALLEYS

An up-to-date establishment. Operated in conformity with the highest standards of efficiency

LEAGUES:

LIVINGSTON CITY BOWLING ASSOCIATION

W. R. Newcomb.....President
Frank Brooking.....Vice President
J. Roy Brownlie.....Secretary-Treasurer

CLASS "A" LEAGUE

Joe Goligoski.....President
W. L. Olsen.....Vice President
J. Roy Brownlie.....Secretary-Treasurer

CLASS "A" LEAGUE TEAMS

Golden Pheasants—Robinson & Melchert, Sponsors
Y-B Cigar—Nash-Finch Co., Sponsors
Miles Lumber—A. W. Miles Lumber & Coal Co., Sponsors
Murray Hotel—Murray Hotel, Sponsors
Mints—Mint Cigar Store, Sponsors
K. of C.—Knights of Columbus Lodge, Sponsors
Montana Power—Montana Power Co., Sponsors
Strand Centre—Strand Bowling Centre, Sponsors
Nash-Finch—Nash-Finch Co., Sponsors
L. F. D.—Livingston Volunteer Firemen, Sponsors

"B" LEAGUE

H. O. Mitchell.....President
H. L. McDonald.....Vice President
H. H. Cole.....Secretary-Treasurer

CLASS "B-1" LEAGUE TEAMS

Ideal Bakery—Jack Roseborough, Sponsor
Fleming's Grocery—G. B. Fleming, Sponsor
Eastep's Shoes—Neal Eastep, Sponsor
Union Meat Market—Bob Somerville, Sponsor
Combination Bar—Bill Stewart, Sponsor
Gateway Motors—Gateway Motors, Sponsors
Gambles Store—Fred Bolte, Sponsor
Pay'n Takit—Pay'n Takit, Sponsors
Hamburger Shop—Charley Martin, Sponsor
Safeway Store—Safeway Store, Sponsors
Livingston Laundry—Livingston Laundry, Sponsors
Cave—Carl Inskeep, Sponsor

"B-2" LEAGUE TEAMS

Moose—John Haugen, Sponsor
Miles Grocery—Arthur (Bud) Miles, Sponsor
Sanitary Barbers—Chas. Hennigh, Sponsor
Schlitz Beer—Bob Weir, Sponsor
Livingston Bakery—Olaf Dahl, Sponsor
Coca-Cola—Ted Stump, Sponsor
O-T-O Ranch—Chan Libbey, Sponsor and Captain
Shelley's Electric—Electric Supply Co., Sponsors
Medicos—Dr. R. E. Walker, Sponsor
Knights of Pythias—Knights of Pythias, Sponsors
Montana Power Co.—Montana Power Company, Sponsors
Bartenders—Corwin Dunn, Sponsor

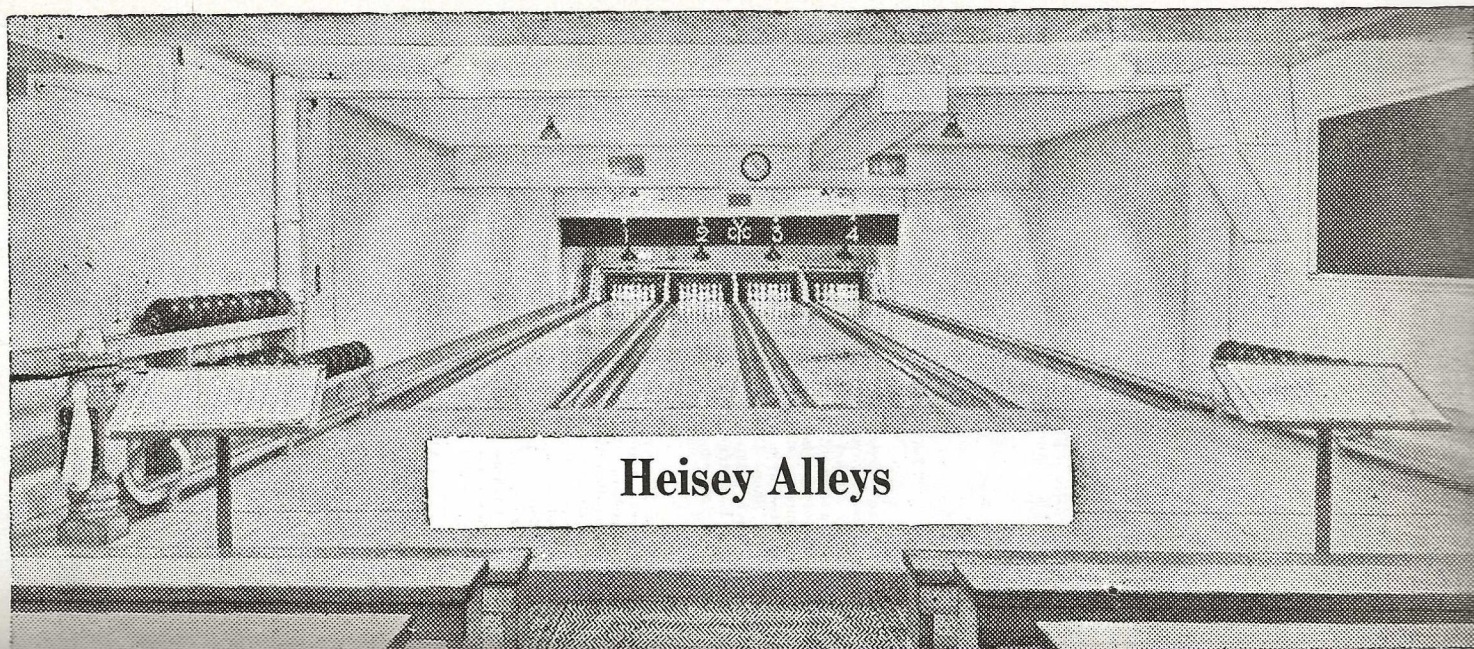
LADIES' BOWLING LEAGUE

Ellen Dillan.....President
Ethel Purdy.....Vice President
Myda Neal.....Secretary-Treasurer

H. A. C. Service Station—J. H. Hasty, Sponsor
Park Inn—Park Inn Nite Club, Sponsor
Three Flags Inn—Three Flags Inn, Sponsor
V. & R.—Vaughn & Ragsdale Co., Sponsor
Park Hotel—Ralph Babbitt, Sponsor
Spencers'—Roy Spencer, Sponsor
Joyland—Bob Campbell, Sponsor
Miles Dry Goods—Dan Miles, Sponsor
Ideal Bakery—Ideal Bakery, Sponsor
Livingston Bakery—R. A. Dahl, Sponsor
Moose—Moose Lodge
Weatherby & White—Weatherby & White Furniture Co., Sponsors

The Strand Bowling Centre

Livingston, Montana



HEISEY ALLEYS

Welcome
Tournament
Bowlers
to
Great Falls



At Tuss, Instructor
Heisey Alleys

LIMBER UP

Before Your Tournament
Competition
at

HEISEY ALLEYS

313 Seventh Street North

THE MARQUETTE

The Home of the
Western Montana Tournament
BUTTE, MONTANA

ERNEST DAZZIE
Owner and Manager

Six Tournament Drives
Modern Cocktail Room
Pocket and Table Billiards

BOWLERS:

We are anxious to have the 1939 Tournament a success and wish to invite the Montana Bowling Association to bring the 1940 Tournament to our alleys, where we will endeavor to hold an even better tournament than was ever held before.

Sincerely,

Ernie.

BOWLERS

See

Charles M. Russell's

Paintings

and

Wax Models

at

***The* MINT**

Lunches and

First Class Refreshments

Great Falls, Mont.

**“Your Meal
Before
Your Eyes”**

at the

CLUB CAFETERIA

Located
Next to the
Johnson Hotel



The right set-up for an enjoy-
able stay in Great Falls

Matteucci & Sons

6551

Phone

6551

A COMPLETE FOOD MARKET

IMPORTED AND DOMESTIC WOOLENS

HANSEN TAILORS

HIGH CLASS TAILORING

219 Central

Great Falls, Mont.

SINGLES RECORDS

All Time Record	711
1930—Dolaghan (Helena)	648
1931—Jim Ely (Great Falls).....	665
1932—Petlin (Butte).....	677
1933—Fultz (Billings).....	653
1934—B. Kennedy (Billings).....	711
1935—John Krall (Great Falls).....	692
1936—F. Oliver (Billings).....	659
1937—George Toole (Great Falls).....	684
1938—Richards (Butte).....	698
1939—.....	

JOHNSON HOTEL

Five Stories of Solid Comfort

**Club Cafeteria
Next Door**

In Memory
of those
who
Have Passed On

Feiden's Flower Shop

Liberty Theatre Building
Great Falls, Montana

Past Presidents of the
Montana Bowling Association

1921—F. C. Walker
1922—Joe Mudro
1923—William Hicks
1924—Art Perham
1925—James Moore
1926—Fred Miller
1927—W. R. Medlin
1928—James Moore
1929—Joe Markham
1930—William Trethway
1931—Dr. J. S. McKinley
1932—Harry Smith
1933—H. Hennessy
1934—L. E. Jones
1935—Alex Remneas
1936—Frank Comte
1937—Arthur W. Merkle
1938—Arthur W. Merkle



**Welcome
Bowlers**

We wish to acknowledge the fine cooperation of the merchants and other business people of the City of Great Falls who helped make this program possible. Our hat is off to the Junior League who sold and gathered the advertising and to Frank Tebeau, Jr. who supervised the work and carried the responsibility of directing its publication.

ODDITIES IN THE NEWS

Joe Jarnot of Great Falls, who has only one arm, has carried an average of 187 in the Straightaway.

The Gas Co-op. team of Billings who are all left handed bowlers will divide honors with A. C. M. left handed booster team.

W. E. "Ole" Snyder of Billings hit 690 in the Singles at Cleveland 1939 A. B. C.

The Great Falls City Championship will be decided between the left handers captained by Jas. Keenan and the right handers captained by H. G. Satterthwaite. The winners of this event will bowl the leading ladies team in the championship bracket. The losers will bowl for consolation honors against a team captained by Bill McKee.

Izzie Armstrong, formerly vice-president of the M. B. A., has returned to tournament competition and reports he'll bowl in the 1939 tournaments. Which will be his first year of bowling.

Jimmie Walker fails to make the necessary seven, not in a dice game but in the 12th frame of the record setting 299 on the Arcade Alleys of Roundup.

Idle Hour Bowling Alleys

119 East Broadway
MISSOULA, MONTANA

Commercial League—6 Teams

JOS. OPITZ, President
WM. ZEH, President

Up-Town League—6 Teams

CHRISS BODING, President
H. G. LAING, Secretary-Treasurer

Garden City League—6 Teams

C. M. TUBBS, President
RAY HAMILTON, Secretary-Treasurer

General League—6 Teams

L. F. NELSON, President
ROBT. OGG, Secretary-Treasurer

Eagles League—12 Teams

T. J. BROMAN, President
C. H. LaPORTE, Vice President
J. A. ALLEN, Secretary-Treasurer

Missoula Mercantile Co.—6 Teams

W. B. TRENERRY, President
W. H. McLEOD, Vice President
E. A. WESTBY, Secretary-Treasurer

Ladies League—6 Teams

HELEN HAWKE, President
B. ANDERSON, Secretary
J. ALLEN, Treasurer

Independent League—6 Teams

RAY SMALL, President
C. E. COYLE, Secretary-Treasurer

Merchants League—6 Teams

H. CLINKINGBEARD, President
ROBT. JONES, Secretary-Treasurer

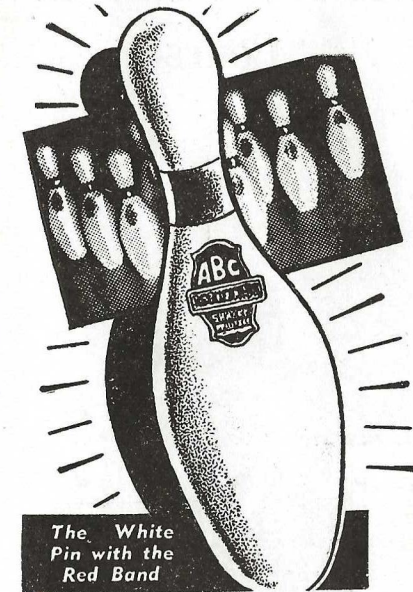
Interfraternity League—6 Teams

HARRY ADAMS, Director
W. SCHENKINBERGER, Manager

Fox Theatre League—4 Teams

C. ODENWALD, President
O. M. TINGLEY, Treasurer

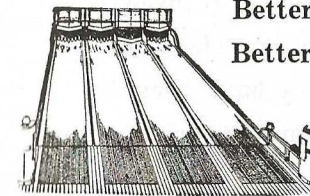
They're Tops in Bowling
Schaaf's Ace Whitebird Pins
Used 100% in This Tournament



Perfect Target, Action, True Ring

BOWLING BALLS, BAGS & SHOES
Balls, Scientifically Drilled

Schaaf's Ace Streamlined Alleys



**Better Built for
Better Bowling**

- ABC Regulation
- Super Construction
- Latest Equipment
- Attractive Colors

WRITE FOR CATALOG

SCHAAF MFG. CO.

Manufacturers and Outfitters of
ABC Alleys and Bowling Equipment
GENERAL OFFICES & FACTORY

312-324 So. Fourth St.

MINNEAPOLIS

MINNESOTA

WELCOME, BOWLERS

Riverview Public Golf Course

Owned and Managed by
JIM ELY



**Montana's
1931 Singles Bowling Champion—665**

Course has been completely rejuvenated and
all fairways are in excellent condition.
Eight Celtex tee boxes have been installed
with four of them on the driving range.

Clubs for Sale and Rent

Season Tickets: Men, \$10; Women, \$5

**Be Seeing You at State Golf
Tournament**



WAYMAN J. WILLIAMS

To you my friends I make this bow.
I've tried derved hard, you've all told me how
To make this tournament a real affair,
To have plenty of seats and good fresh air.
To raise all standards, to increase the prize,
To reduce the cost, to work and advertise.
To adopt a score system which works by electricity,
To hire score keepers who work implicitly.
Now this all sounded as easy as pie,
So I started in determined to satisfy,
The bowlers tall and the bowlers short,
For I figured all knew something about this sport.
The bowlers all, both poor and great,
Wanted to bowl early if I scheduled them late,
They wanted their team on Friday at eight,
They wanted their doubles on Saturday in state.
Well I scheduled them early and I scheduled them late,
I tried to schedule them all on the week-end slate,
I tried to do everything just right,
To settle all arguments without a fight.
But after I'd stayed up many a night
I found I couldn't do anything right,
So what I've done is the best that I know,
So once again I make my bow.
I hope you all bowl a real big score,
Go home and complain that you should have hit more.
For such, my friends, is the bowling game today,
And from what I've learned it's always been that way.

**WAYMAN J. WILLIAMS,
Secretary-Treasurer
Montana Bowling Association**

MONTANA BOWLING ASSOCIATION MASTER SCHEDULE

TEAMS

MONTANA BOWLING ASSOCIATION

TEAMS

MASTER SCHEDULE

5 SHIFTS	4 SHIFTS										3 SHIFTS	2 SHIFTS
TIME	TIME	ALLEYS		ALLEYS		ALLEYS		ALLEYS		SHIFT	TIME	TIME
5 PM		1 - 5	6 - 10	11 - 15	16 - 20	21 - 25	26 - 30	31 - 35	36 - 40	I		
7 PM.	6 P.M.	41 - 45	46 - 50	51 - 55	56 - 60	61 - 65	66 - 70	71 - 75	76 - 80	II	6 P.M.	8 P.M.
9 PM.	8 P.M.	81 - 85	86 - 90	91 - 95	96 - 100	101 - 105	106 - 110	111 - 115	116 - 120	III	8 P.M.	10 P.M.
11 PM.	10 P.M.	121 - 125	126 - 130	131 - 135	136 - 140	141 - 145	146 - 150	151 - 155	156 - 160	IV	10 P.M.	
1 A.M.	12 M.	161 - 165	166 - 170	171 - 175	176 - 180	181 - 185	186 - 190	191 - 195	196 - 200	V		

DOUBLES AND SINGLES

8 A.M.	8 A.M.	100 & P 105 & P	101 & 102	103 & 104	86 & 87	88 & 89	85 & P 90 & P	81 & 82	83 & 84	I	9 A.M.	10 A.M.
9.45 A.M.	9.45 A.M.	96 & 97	98 & 99	111 & 112	113 & 114	115 & P 120 & P	95 & P 110 & P	91 & 92	93 & 94	II	10.45 A.M.	11.45 A.M.
11.30 A.M.	11.30 A.M.	140 & P 145 & P	141 & 142	143 & 144	126 & 127	116 & 117	118 & 119	106 & 107	108 & 109	III	12.30 P.M.	1.30 P.M.
1.15 P.M.	1.15 P.M.	136 & 137	138 & 139	151 & 152	153 & 154	128 & 129	125 & P 130 & P	121 & 122	123 & 124	IV	2.15 P.M.	TIME CHANGES TO EARLIER COMBINE SCHEDULE HOUR WHEN TEAM SHIFT STARTS BEFORE 8:00 P.M.
3.00 P.M.	3.00 P.M.	156 & 157	158 & 159	146 & 147	148 & 149	155 & P 160 & P	135 & P 150 & P	131 & 132	133 & 134	V	4.00 P.M.	
4.45 P.M.	4.45 P.M.	180 & P 185 & P	181 & 182	183 & 184	166 & 167	168 & 169	165 & P 170 & P	161 & 162	163 & 164	VI		
6.30 P.M.	6.30 P.M.	176 & 177	178 & 179	191 & 192	193 & 194	195 & P 200 & P	175 & P 190 & P	171 & 172	173 & 174	VII		
² 8.00 A.M.	8.15 P.M.	66 & 67	68 & 69	76 & 77	8.15 PM SHIFT 78 & 79	196 & 197	198 & 199	186 & 187	188 & 189	VIII	5.45 P.M.	1.30 P.M.
1.30 A.M.	10 P.M.	60 & P 65 & P	61 & 62	63 & 64	46 & 47	48 & 49	45 & P 50 & P	41 & 42	43 & 44	IX	7.30 P.M.	3.15 P.M.
11.45 P.M.	11.45 P.M.	56 & 57	58 & 59	71 & 72	73 & 74	75 & P 80 & P	55 & P 70 & P	51 & 52	53 & 54	X	9.15 P.M.	5.00 P.M.

SHIFTS XI-XII-XIII TO BE USED WITH 5 SHIFTS FOR TEAMS

10. P.M.		20 & P 25 & P	21 & 22	23 & 24	6 & 7	8 & 9	5 & P 10 & P	1 & 2	3 & 4	XI		
² 9.45 A.M.		16 & 17	18 & 19	31 & 32	33 & 34	35 & P 40 & P	15 & P 30 & P	11 & 12	13 & 14	XII		
8.15 P.M.		36 & 37	38 & 39	26 & 27	28 & 29					XIII		

TEAMS

DOUBLES

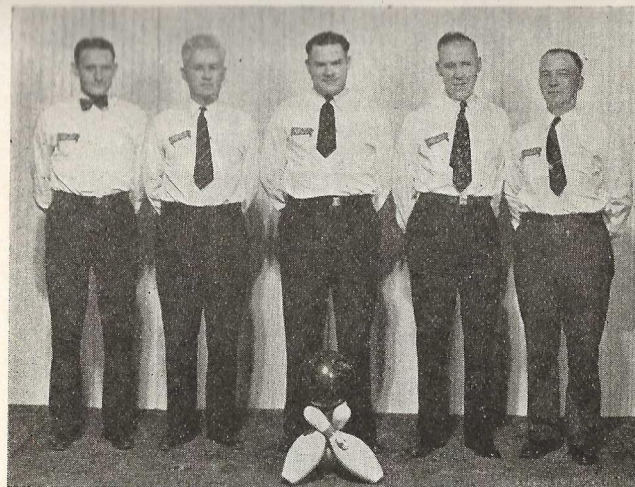
AND

SINGLES

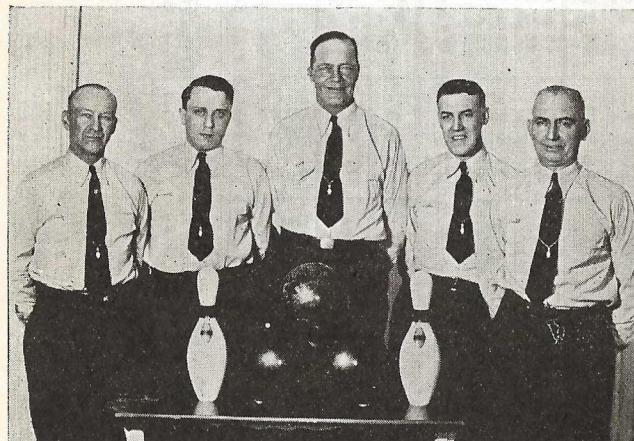
2 INDICATES 2ND DAY

CHECK TEAM NUMBERS WITH DOUBLES AND SINGLES NUMBERS TO FIND CORRECT SHIFT AND STARTING ALLEY

STATE OFFICERS:
 PRESIDENT: RALPH CONRAD VICE PRESIDENT: H.G. SATTERTHWAITE
 SEC. TREAS: WAYMAN J. WILLIAMS ASST. SEC. TREAS: AYARD SYMES



GREAT FALLS BEER—Keenan, Linnane, Sohl, Jordan, Polich



JOHNSON HOTEL—Ely, Tebeau, Johnson, Fox, Trerise



BEST OF THE WURST, Kalispell—Peck, Burg, Dreesen, Rand, Riehe

Take Home a Gift from the Book and Gift Shop

Four Doors From the Rainbow Hotel on Third Street

If You Hit 300, That's Perfect Bowling
If You Buy a Monarch Home, That's Perfect
Judgment

MONARCH LUMBER CO.

ELLIS

Quality Meat and Groceries
13 4th St. No.

Compliments of the
**Great Falls Candy & Tobacco
Company**

Duval-Wallace Hardware

Square Yourself
By taking her back a piece of Franciscan Pottery.

SHOWERS LAUNDRY Frenchy's Log Cabin Camp

Completely New Modern Log Cabins
LUNCH ROOM · TRAILER FACILITIES · REFRESHMENTS
Fred Meunier, WOLF CREEK, MONTANA

Buy a Garden Tract and
Grow Cherries—Don't Make 'em
Great Falls Townsite Co.

HUSSMAN'S, Inc.
For Healthful Recreation
Play Billiards
215 Central

It's Part of the Game
Cold... Ice Cold...
pure as sunlight



Pause... at the
familiar red cooler

Great Falls Coca-Cola Bottling Co.
Phone 7415

OPEN TEAMS

Record, Marquettes	2968
1934—Herrick's, Missoula	2838
1935—Kaufman's, Great Falls	2886
1939—Walsh's Sheriffs, Anaconda	2782
1937—Milwaukee Tavern, Butte	2905
1938—Park Buffet, Butte	2844
1939—	

WESTERN AIR EXPRESS

Take Home a Box of Candy
Pure Candies—Made Fresh Daily
Just Around the Corner
THE CANDY SHOP
12 Fourth Street North

BART'S PLACE

Smelter Ave. Black Eagle
Serves the Biggest Glass of Beer in Town

TOURNAMENT SCHEDULE

Team Schedule, 1939

SATURDAY, APRIL 8TH

8 P. M. Shift

Moon Agency, Great Falls	825
Finlen Barbers, Butte	825
Kelly Springfield Tires, Great Falls	825
Home Oil, Great Falls	825
Great Falls Candy Co., Great Falls	825
A. C. M. No. 21, Great Falls	825
A. C. M. No. 17, Great Falls	825
G. N. Goats, Great Falls	825

Bell-Frances Beauty Shop

503 Central Ave.

Call 7878

Koolerwave—Longer Lasting—Waves Are One-Half Inch Closer
to the Head—Last Longer

10 P. M. Shift

Silver Gas, Conrad	750
Butchers Local, Great Falls	750
Best of the Wurst, Kalispell	825
B. P. O. E., Butte	825
Kalispell Boosters, Kalispell	825
Bon Ton Bakery, Butte	825
Barber Music, Great Falls	750
Shelby	750

KOPS PIANO HOUSE

SHEET MUSIC

RECORDS

"Mail Orders a Specialty"

508 Central

Great Falls

Father Werner, who bowls with the Heisey alley team, in his first year of bowling has an average of 173. He is the only bowler in the tournament who represents the clergymen of Montana. Power to him for he pioneers in a game which should be attractive to all good people.

"Dick" Goodenbour, manager of the Arcade alleys of Roundup, has been appointed sales manager for the Schaaf Manufacturing Company of Minneapolis, Minn.

TOURNAMENT SCHEDULE

SUNDAY, APRIL 9th

2 P. M. Shift

Dell's Devils, Great Falls	825
Tribune, Great Falls	825
Empire Motors, Billings	750
Post Office, Great Falls	825
Civitans, Great Falls	825
Cogswell Ins., Great Falls	825
A. T. Klemens, Great Falls	825
Kaufman's, Great Falls	825

When You Think of Flowers—Think of Electric City Conservatory

"Palace of Flowers"

1413 5th Ave. No.

Phone 6676

4 P. M. Shift

Hub, Havre	750
Havre Elec., Havre	825
Grand Hotel, Havre	825
Rainbow, Havre	825
Clack's, Havre	750
Buttrey's, Havre	750
Lou Lucke, Havre	825
Nelson Furniture, Havre	825

MONTANA HARDWARE

Wholesale Distributors

Butte

Great Falls, Mont.

BOOSTER SINGLES AND DOUBLES

These events have been arranged for the convenience of both the bowlers and the tournament officials.

MONTANA BEER PARLOR

Great Falls and Schlitz

Direct from Keg

612 Central Ave.

TOURNAMENT SCHEDULE

SUNDAY, APRIL 9th (Continued)

8 P. M. Shift

Markle Trans., Glasgow	825
Magruder Motor, Glasgow	825
Brass Rail, Great Falls	825
Montana Flour Mills, Great Falls	825
Grizzly Gas, Great Falls	825
Silver Gas, Great Falls	825
Standard Furniture, Great Falls	825
White Spot, Great Falls	825

JOCKEY CLUB

and

LOBBY BAR

Welcome You

To spend an evening of novel entertainment and dancing in one of Montana's Finest Night Clubs.

We serve a variety of well prepared foods.

Expertly mixed drinks of all kinds

516-518 Central Ave.

Great Falls, Montana

MONDAY, APRIL 10th

8 P. M. Shift

A. C. M. No. 1, Great Falls	
A. C. M. No. 2, Great Falls	
A. C. M. No. 3, Great Falls	
A. C. M. No. 4, Great Falls	
A. C. M. No. 5, Great Falls	
A. C. M. No. 6, Great Falls	
A. C. M. No. 7, Great Falls	
A. C. M. No. 8, Great Falls	

You Are Obligated to Patronize Bowling Sponsors

Yellow Cab and Baggage Co.

The Thinking Fellow Calls a Yellow

Phone 6535

TOURNAMENT SCHEDULE

TUESDAY, APRIL 11th

8 P. M. Shift

Peoples Gas, Great Falls	825
Volk Brewery, Great Falls	825
Brass Rail No. 2, Great Falls	825
Pennant Cigar Store, Great Falls	825
Great Falls Townsite, Great Falls	825
National Laundry, Great Falls	825
Scotch Woolen Mills, Great Falls	825
McIntosh Tailors, Great Falls	825

The Hotel Rainbow

Extends a Hearty Welcome
To All Bowlers

EAT IN OUR FAMOUS DINING ROOM

Ralph C. Bricker
Manager

C. Pat Egan
Asst. Manager

10 P. M. Shift

Big Butte Tavern No. 2, Butte	825
A. C. M. No. 10, Great Falls	825
A. C. M. No. 11, Great Falls	825
A. C. M. No. 12, Great Falls	825
A. C. M. No. 13, Great Falls	825
A. C. M. No. 14, Great Falls	825
A. C. M. No. 18, Great Falls	825
Roi-Tan-Louis Cohn, Great Falls	825

BENNETT NASH MOTORS

NASH AND LAFAYETTE AUTOMOBILES

Phone 2-1643

404-406 First Ave. S.

GREAT FALLS

If You Want to Drive Tomorrow, Drive Carefully Today

ALWAYS SOMETHING NEW AT

The Men's Shop

Rainbow Hotel Street

TOURNAMENT SCHEDULE

WEDNESDAY, APRIL 12

8 P. M. Shift

Rialto Commokers, Helena	825
Kessler Beer, Great Falls	825
Great Falls Beer, Great Falls	825
Rainbow Hotel No. 2, Great Falls	825
A. C. M. No. 9, Great Falls	825
A. C. M. No. 19, Great Falls	825
A. C. M. No. 15, Great Falls	825
A. C. M. No. 16, Great Falls	825

Compliments of

Rainbow Brand Products

Hams—Bacon—Lard

Inspected Meats

GREAT FALLS MEAT CO.

PACKER

THURSDAY, APRIL 13

8 P. M. Shift

Heisey Alleys, Great Falls	825
Hub Clothing, Great Falls	825
Duval-Wallace, Great Falls	825
Oxford, Missoula	750
Allen Electric, Helena	825
Big Six Barber, Great Falls	825
A. C. M. No. 20, Great Falls	825
Goodman's Smoke House, Great Falls	825

Remember—You Are Obligated to Be
Considerate of the Other Bowlers

Transient Rooms \$1 With Private Bath \$1.50

Weekly Rates \$4.00

NORTHERN HOTEL

Tub and Shower Baths Free to Guests

TOURNAMENT SCHEDULE

FRIDAY, APRIL 14

8 P. M. Shift

Warm Springs Dairy, Anaconda	825
Rainbow Hotel Ramblers, Great Falls	825
Kessler Beer, Helena	825
Paris Fountain Cafe, Great Falls	825
Montana Bar, Great Falls	825
Coca-Cola, Great Falls	825
McIntyre, Anaconda	825
Lee's Texaco Station, Cut Bank	825

Between Strikes

Drink

Dr. Pepper

DR. PEPPER BOTTLING CO.

Great Falls, Montana

SATURDAY, APRIL 15

6 P. M. Shift

Palmquist Electric, Helena	825
Anaconda Booster, Anaconda	825
Broadway Lunch, Missoula	825
Midway Bar, Anaconda	825
The Club, Fort Peck	825

CARLTON HOTEL

Sixth—Central

NOT THE BEST, BUT GOOD AS THE REST

Compliments of

Fisher's Dog & Cat Hospital

3700 2nd Ave. No.

Great Falls, Mont.

TOURNAMENT SCHEDULE

SATURDAY, APRIL 15 (Continued)

8 P. M. Shift

Silver Gas, Fort Peck	825
M. Y. Daniels, Butte	825
J. B. Miller Ins., Helena	825
Dutch Girl Bakery, Butte	825
McGrath's, Butte	825
Hansen Packing Co., Butte	825
The Shanty, Butte	825
Silver Bow Park, Butte	825

10 P. M. Shift

Boulevard Rose Gardens, Butte	Open
Nevin-Frank Co., Butte	825
Eddy's Bakery, Bozeman	Open
Snell Auto Service, Butte	825
Gas Co-op., Billings	825
Brunswick Cigar Store, Billings	825
Cheerio Club, Billings	825
Butte Beer, Butte	825

You Will Enjoy Your Meals at

POWELL'S CAFE

POPULAR PRICES—IT'S THE COFFEE

325½ 1st Ave. No.

Next Door to Pennant Cigar Store

Copper State Cleaners

414 First Avenue North

Phone 6262

CLEANING AT ITS BEST

CLARENCE E. WALLER

Son of Jim Waller, one of Montana's oldest bowlers, will be missed at this tournament as he passed on in December, 1938. His death was caused by heart trouble.

DR. E. S. EDWIN

OSTEOPATHIC PHYSICIAN

227 Ford Bldg.

Phone 2-1502

Res. 2-1877

TOURNAMENT SCHEDULE

SATURDAY, APRIL 15 (Continued)

12 Midnight Shift

Anderson Motor, Helena	825
Swainson, Helena	825
Telephone Co., Helena	825
Texaco Fire Chief, Helena	825
Hofbrau, Helena	825
Anderson Clothing, Helena	825
Reserved	
Reserved	

LUGGAGE AND LEATHER GOODS
Hartman Dealers
VICTOR ARIO SADDLERY CO.
617 Central

SUNDAY, APRIL 16

12 Noon Shift

Gas Co-op., Bozeman	825
Idle Hour No. 1, Missoula	825
Northern Bar, Butte	825
Cesareni Grocery, Butte	825
Pennzoil, Billings	825
Big Butte Tavern No. 1, Butte	825
Gerry's Service Station, Butte	825

2 P. M. Shift

Chappelle Cleaners, Butte	825
Red Rooster, Butte	825
M. M. Hardware, Missoula	825
A. C. M. Samplers, Butte	825
A. C. M. Engineers, Butte	825
Montana Hardware, Butte	825
Montana Power, Bozeman	825
Montana Power, Livingston	825

STANDARD FURNITURE CO.

The Home of Famous Karpen and Kroehler
Living Room Furniture

Earl Tucker, formerly manager of both the Anaconda bowling alleys and the Central alleys of Helena, is now engaged as a salesman in Helena. With his time thus occupied his 239 bowling average will certainly suffer.

TOURNAMENT SCHEDULE

SUNDAY, APRIL 16 (Continued)

4 P. M. Shift

Estis Maytag, Missoula	825
Billings Boosters, Billings	825
Butte	
Butte	
Butte	
Butte	
Butte	

William Morrison, manager of the Idle Hour Alleys, is the proud "papa" of a son, John James, who weighed less than half the weight of a bowling ball.

People's Gasoline Station

"The Station that Broke the Price"

OILS CAR GREASING GREASES

West Side, Near Montana Brewery Building

Great Falls, Mont.

SUPPORT THOSE WHO SUPPORT YOU

— STRIKE —

You have hit the right spot for
TYPEWRITERS, ADDING MACHINES and
SUPPLIES

when you come to us

GREAT FALLS
TYPEWRITER EXCHANGE

12 Third St. No.

Phone 5115

Booster Sweepstakes will be bowled Sunday,
April 16th, at completion of regular schedule.

Once again The Classic stakes its reputation for picking favorites,
with a brilliant display of dressmaker suits and coats, spectator
sportswear, smart dresses and ensembles.

THE CLASSIC SHOP

407 Central Avenue

TOURNAMENT SCHEDULE

MONDAY, APRIL 17th

Open Events Begin

9 P. M. Shift

Pennant Cigar Store, G. F.	Open
Montana Power, G. F.	Open
National Laundry, G. F.	Open
Mint Tavern, G. F.	Open
Club Cafeteria, G. F.	Open
A. C. M. No. 4, G. F.	Open
Maverick Bar, G. F.	Open
Falls Hotel, G. F.	Open

SPARE YOURSELF

The Time and Strike Out

for

GOODMAN'S COCKTAIL LOUNGE

Just Around the Corner

4th St. at Central Ave.

TUESDAY, APRIL 18th

9 P. M. Shift

Great Falls Brewery, G. F.	Open
Nick's Place, G. F.	Open
Sally Ann, G. F.	Open
A. C. M. No. 1, G. F.	Open
Park Hotel, G. F.	Open
Pure Milk, G. F.	Open
Canyon Bar, G. F.	Open
A. C. M. No. 2, G. F.	Open

BOOST BOWLING SPONSORS

The New Silver Gasoline
CENTRAL SERVICE STATION

TOURNAMENT SCHEDULE

WEDNESDAY, APRIL 19th

9 P. M. Shift

Johnson Hotel, G. F.	Open
A. C. M. No. 3, G. F.	Open
Goodman's Smoke House, G. F.	Open
Wilson Motor, Butte	Open
Butte Chamber of Commerce, Butte.....	Open
Tom Hardy, Butte	Open
Reserved	
Reserved	

WELCOME

Montana Bowlers

We welcome you to Great Falls and cordially
invite you and your wife to visit our store
during your leisure hours in our city.

Quality Furniture at Reasonable Prices

Albrecht's

ESTABLISHED 1880

111 Central Avenue

THURSDAY, APRIL 20th

9 P. M. Shift

Brady's Cafe, Helena	Open
Broadwater Inn, Helena	Open
Rialto, Helena	Open
Great Falls Beer, Helena	Open
Your Alleys, Havre	Open
Oil Cans, Shelby	Open
Reserved	
Reserved	

BISON MOTOR CO.

Ford—Mercury—Lincoln Zephyr Dealers

Where Bowlers Meet
The Old Stand

MAVERICK BAR

126 Central

TOURNAMENT SCHEDULE

FRIDAY, APRIL 21st

5 P. M. Shift

Reserved	
Reserved	
Reserved	
Reserved	
Midland Recreation, Billings	Open
Hardin Gagner Ins., Butte	Open
Arcade, Roundup	Open
Neitzels, Roundup	Open

7 P. M. Shift

O'Brien's, Butte	Open
Yandt's Men's Wear, Missoula	Open
Grill Cafe, Missoula	Open
Eddy' Pan Dandy, Missoula	Open
Kessler Beer, Missoula	Open
Highlanders, Missoula	Open
Quality Market, Missoula	Open
Idle Hour No. 2, Missoula	Open

SULLIVAN'S INC.

620 Central

Ladies' Wearing Apparel

9 P. M. Shift

M. & M., Butte	Open
Park Bar, Anaconda	Open
Larsen's Sheriffs, Anaconda	Open
Roach and Smith, Anaconda	Open
Hiawathans, Miles City	Open
Bungalow Cafe, Roundup	Open
Roundup Miners	Open
Old Heidleberg Beer, Billings	Open

Walter Tuss and "Spuds" Valacich led Great Falls Open Team League with 202 averages, Walt leading by a grand total of two pins.

CHARLES RUSSELL MEMORIAL

An interesting place to visit while you're in Great Falls.

THE PIONEER DAIRY

Milk—Cream—Buttermilk
Chocolate Milk—Bierley's Orangeade

TOURNAMENT SCHEDULE

FRIDAY, APRIL 21 (Continued)

11 P. M.

Old Fashioned Beer, Billings	Open
Babcock Alleys, Billings	Open
Anaconda Service Station, Anaconda	Open
Anaconda Beer, Anaconda	Open
Smith Cards, Anaconda	Open
Du Pont Triclene, Billings	Open
Wagners Men's Shop, Billings	Open
Reno Club, Billings	Open

BOWLERS!

See us for Bowling Shoes and Oxfords for Men and Women

We Carry the Famous

JIMMY SMITH SHOES

For Maximum Comfort and Higher Scores

Bowling Shirts and Uniforms Made and Lettered to Order

**MURPHY-MACLAY
HARDWARE CO.**

200 Central Ave.

Great Falls, Mont.

The office assistants for the 1939 Tournament are Marvin Keenan, son of "Jim" Keenan, Sr., and "Billie" Treweek, one known to all the bowlers.

The score keepers for the Tournament are under the supervision of "Mert" Schaeffer, a straightaway bowler who should and does know his business.

Join the "Share the Road" Club
as sponsored by all Shell Dealers

Signs and Displays by
FALLS SIGN SERVICE

NATIONAL LAUNDRY

Dry Cleaners

1000 First Ave. N.

Phone 5451

TOURNAMENT SCHEDULE

SATURDAY, APRIL 22

1 A. M. Shift

Arcade, Bozeman Open
Oak's Cigar Store, Bozeman Open
Stockman Mavericks, Billings Open
Arcade, Butte Open
Highlander Beer, Butte Open
Custer Club, Miles City Open
B. P. O. E., No. 537, Miles City Open
Great Falls Beer, Fort Peck Open

FALLS HOTEL

Union Bus Depot

Free Shower Baths

Corner Fourth Street and First Avenue S.

M. L. Hammill, Owner

GREAT FALLS, MONTANA

OPEN SWEEPSTAKES

Begin at 2 P. M. Sunday

April 23rd

The Classic of Classics

SANITARY CLEANERS

Four hour service on Prosperize Moth, Odorless Dry Cleaning.
No extra cost. Also rush pressing neatly done.

PHONE 7669 FOR SERVICE

114 Central Avenue

Great Falls, Mont.

\$3561.00 Cash

825 Teams

1	\$175
2	\$125
3	\$100
4	\$75
5	\$70
6	\$65
7	\$60
8	\$55
9	\$50
10	\$45
11	\$40
12	\$35
13	\$30
14	\$25
15	\$20
16	\$15
17	\$10
18	\$8
19	\$7
20	\$5
Total	\$970

340 Doubles

1	\$60
2	\$40
3	\$30
4	\$25
5	\$20
Total	\$175

179 Singles

1	\$30
2	\$25
3	\$20
4	\$15
5	\$10
Total	\$100

750 Teams

1	\$100
2	\$75
3	\$50
Total	\$225

160 Singles

1	\$30
2	\$25
3	\$20
4	\$15
5	\$10
Total	\$100

Open Team

1	\$300
2	\$200
3	\$100
4	\$80
5	\$70
6	\$60
7	\$50
8	\$40
9	\$30
10	\$20
11	\$15
12	\$10
13	\$8
14	\$7
15	\$5
Total	\$995

Open Doubles

1	\$120.00
2	\$80.00
3	\$60.00
4	\$50.00
5	\$40.00
6	\$30.00
7	\$20.00
8	\$12.50
9	\$10.00
10	\$8.00
11	\$7.00
12	\$6.00
13	\$5.00
14	\$4.00
15	\$3.50
Total	\$456.00

Open Singles

1	\$60.00
2	\$50.00
3	\$45.00
4	\$40.00
5	\$35.00
6	\$30.00
7	\$25.00
8	\$22.50
9	\$20.00
10	\$17.50
11	\$14.00
12	\$13.00
13	\$12.00
14	\$11.00
15	\$10.00
16	\$9.00
17	\$8.00
18	\$7.50
19	\$6.00
20	\$5.50
21	\$5.00
22	\$3.50
23	\$3.50
24	\$2.50
25	\$2.00
Total	\$455.00

High individual game (each class) \$ 5.00
High team game (each class) \$10.00
All-Events (open event) \$25.00
All-Events (825 class) \$15.00

KESSLER BEER

SINCE 1865

Brewed from Pure Mountain Spring Water
Piped from Our Own Springs on the Slopes
of Mount Helena Direct to the Brewery.

KESSLER BREWING CO.

Helena, Montana

DEVINE & ASSELSTINE

GREAT FALLS DISTRIBUTORS

BOOSTER TEAM CHAMPIONS 1934-1938

Record	2799
1934—Western State Building and Loan	2605
1935—Bertsche's Food Market	2799
1936—A. C. M. No. 9	2569
1937—Moose Legion	2756
1938—Great Falls Townsite	2695
1939—	



Coffee Shop

Refreshment
Room

For a Fresh Start
Stop at a Hotel

When in Great Falls
Stop at

THE PARK HOTEL

Fred J. Perra, Mgr.

Have a Good Time and "Strike"
for Steller's for That Gift
to Take Home



Complete Gift Shop Dept.

Watches Diamonds Jewelry

Doubles Record	1281
1934—Tulin-Dolaghan	1227
1935—B. Swanson-S. Ugrin	1259
1936—G. Hilton-J. Gibb	1265
1937—Domitravich-Swanson	1261
1938—A. Tuss-W. Tuss	1281
1939—	

Trophies for Tournament

Furnished by

JOSTENS

Percy Newton, District Manager



Be Assured of Excellent Results

By Using

Dependable Rex Flour

**Rex All-Purpose Flour is Tested
to Give You True Satisfaction**

Rexipes available at your grocers.

Royal Milling Company

(Trade Name)

Central Division of General Mills, Inc., Great Falls, Montana



Greetings

Bertsche's Food Market

Phone 4391

AWARDS OTHER THAN MONIES
VALUE \$500.00 TROPHIES VALUE \$500.00

Teams: Team trophies will be awarded to the first place team in each division.

Doubles: A trophy will be awarded to each party participating in winning first place in either the open or 340 doubles event.

Singles: A trophy will be awarded to the individual who wins first place in each of the three divisions.

All-Events: An all-events trophy will be awarded the winners in each division.

Medals

Teams: Medals will be awarded to the teams in the first three places of each division.

First place—Gold Medals

Second place—Silver Medals

Third place—Bronze Medals

Perfect Scores: Exceptional gold medals will be waiting for the person or persons who roll perfect scores in any division or event.

Rings

Montana Bowling Association's All State Team—Each member will receive an official ring.

Special Awards

BRUNSWICK-BALKE-COLLENDER CO.

One Mineralite Bowling Ball and Shoe Bag to the individual who bowls the highest series in team play.

Five pairs of bowling shoes to the team wearing the most outstanding uniforms.

There is one outstanding **CLEANER** in every community. We pride ourselves in holding that position.

**Vallet Quality
Cleaners & Furriers**

"The House That Quality Built"

814 Central Ave.

Phone 7626

THE GLENWOOD

211 Central Avenue

Leading Bar For Mixed Drinks

also
Famous for Fountain Service

RULES WHICH MUST BE OBSERVED

An Open Team is one which is willing to participate in any competition or one which according to the Montana Bowling Association must be classed as "open" because one or more of its members average 180 or over or because the composite team average is over 825.

An 825 Team is one which has a composite average which is not more than 825 and on which no member has an individual average of 180 or over.

A 750 Team is one which has a composite average which is not more than 750 and on which no member has an individual average of 165 or over.

340 Doubles shall be bowled by two men whose combined averages total 340 or less. Neither individual shall have an individual average of 180 or over.

Open Bowlers shall be required to bowl both singles and doubles in addition to their team matches.

Booster Bowlers shall be required to bowl both singles and doubles in case they choose to bowl either.

Booster Singles will be bowled in two classes, one class being for those with averages which are less than 180, the other for those with averages which are less than 161.

Averages and How to Figure Them: If a bowler participates in competition in more than one league in one establishment or in more than one league in different establishments his average must be based upon all of the games which he has bowled in league play.

ENTRANCE FEES

Cost Per Team: \$27.50 shall be charged for each five-man team participating in the Annual Tournament of the Montana Bowling Association.

Open Singles and Doubles: \$3.50 per man event shall be charged for open event singles and doubles.

Booster Singles and Doubles: \$2.50 per man event shall be charged for 340 doubles and both divisions of the singles.

BERGER'S

Department Store

Best Wishes

For a Successful

Bowling Tournament

Norman & Walter Thisted

Guaranteed

Gas Equipment

For Your Home

- ... Mueller Gas Furnaces and Boilers
- ... New Modern Magic Chef Ranges
- ... Fauce-Hot Automatic Water Heaters
- ... Payne Floor Furnaces
- ... Humphrey Radiant Fire Heaters

Consult us on any of your HEATING, COOKING, REFRIGERATION or WATER HEATING problems. We will gladly help you and give an estimate of cost of installation.

Montana-Dakota Utilities Co.

301 First Ave. N.

Phone 3281

Ask Your Grocer for

Gold Bar Canned Goods

and

C. H. B. Tomato Products

Distributed Exclusively

by

THE HEISEY CO.

**CONFIDENTIAL REPORT OF THE CONDITION OF
THE NATION UNDER THE NEW DEAL**

Population of the U. S.	124,000,000
Eligible to Old Age Pension	30,000,000
This leaves to do the work	94,000,000
Persons working for the Government	20,000,000
This leaves to do the work	74,000,000
Uneligible to work, Child Labor Law	60,000,000
This leaves to do the work	14,000,000
Number unemployed in the Nation	13,999,998
This leaves to do the work, ME and the President	2
The President has gone fishing, and I'm getting Damn tired.	

STATE FARM MUTUAL INSURANCE

LOWEST COST—BEST SERVICE
LIABILITY & PROPERTY DAMAGE \$22.10 A YEAR
BELL INSURANCE AGENCY
437 Ford Building Phone 3893

SAFEWAY STORES

DISTRIBUTION WITHOUT WASTE
Stores in All Leading Montana Cities

**DEMPSEY
INN**

Steak and Chicken
Dinners

DANCING

Fone 8177

1 Mile South

Good Driving Plus Good Equipment Guarantees
Highway Safety

We Repair All Makes of Cars
and Guarantee Your Satisfaction

AUTO CRAFT SHOP

323 First Avenue South

THURSTON CO.

Chrysler-Plymouth Distributors

415 First Avenue North

Andy's Tire Company, Inc.

GOODYEAR

TIRES

TUBES

Great Falls—Billings

Home Tire Service Station

125 First Ave. N.

AL GILLIS, Prop.

Fone 5886

Washing Greasing
Silver Gas Springfield Tires Quaker State Oil Veedol Oil

SEESE CHEVROLET CO.

Service Institution Where
Friend Meets Friend

SPONSOR YOUR SPONSORS

CARL HOLM

MOBILGAS

GOODRICH TIRES
800 First Avenue North

MOBILOIL

Tune In



Eddy's

Lone Ranger

**Mon., Wed.,
Fri. Evening**

PERFECT SCORES

Members of the Tournament 300 Club:

F. J. Sten, Butte
George Toole, Missoula
Members are needed for

1935
1937
1939

**T. F. MYERS COMPANY
Distributors of
Grizzly Gasoline**

We Supply the Following Great Falls Dealers
PARK SERVICE STATION—Rear of Park
Hotel
WESTERN MOTOR CO.
SMELTER SERVICE STATION—Opposite
Oasis, Black Eagle

You can always do better at
Strain Brothers

**Great Falls' Leading
Shopping Center**

**For People Who
Know Value
Best**

WHAT TO SAY AND DO WHILE YOU'RE BOWLING

- 1—If you hit the headpin and don't strike, call the manager.
- 2—If you bowl a ball that doesn't hook, mention the fact you're bowling on backup alleys.
- 3—If you get a lucky strike, talk about the stuff you put on the ball.
- 4—If you pick up a split just say, "that's an easy spare for me."
- 5—If you blow a single pin it is advisable to look at the runways to see what made you stumble, unless you think you accidently dropped the ball.

"Lustrlux"

Odorless Dry Cleaning

Expert Finishing

One Day Service if Desired

Phone 3257

**Ideal Laundry & Dry Cleaning
Co.**

**Eliminate Splits in Your
Insurance Program by
Calling "A Man in the Moon"**

MOON AGENCY, INC.

24 4th St. No.
Great Falls

Phone 6858
Billings

**Congratulations to the Montana Bowling
Association**

AYRSHIRE DAIRY
Phone 6668

Reservation 3385

MIAMI CAFE

The Best Ravioli Dinner

Black Eagle

The Best Ravioli Dinner

Black Eagle

was organized in Billings, Mont., in 1936. Who was responsible for the idea? It's difficult to answer this question but it is certain that L. E. Jones, F. J. Sten, Frank Comte, Joe Markham and others made the first advances.

Compliments of

**Ryan
Mercantile**

Ryan Mercantile

Ralph Conrad won 5 cents in the Western Montana in 1939. He bowled a full game score of 85.

PUBLIC DRUG CO.
COMPLETE DRUG STORE
Finest Fountain Service

COMPLETE DRUG STORE
Finest Fountain Service

Scorekeeper.

Score.

from

Score _____

[illegible]

Follow the Teams — Scores — Tourney — Every Day on the Sports Pages of The Great Falls Tribune — Montana's Best Newsgatherer


STAR CIGAR STORE
212 Central

A. W. Merkle and Mr. Kaiserman invented new pin spotters.
Happy Wray and six new alleys moved to Havre.
H. G. Satterthwaite hit the head pin and left the 4, 6, 7, 8, 9, & 10.
Ole Synder is installed as new head of the Midland-Recreation.
The Arcade of Bozeman is modernized.
E. G. Goodwin has purchased the Miles City Sports Center.
Jake Wentworth has adopted curve ball bowling.
A rolling ball gathers no moss.
A black ball remains black, altho it fades.
When the 5 and 10 pins are left it is known as the Woolworth.
A railroad is a thing trains run on and bowlers fear.
A pin boy is usually a good man who has had tough breaks.
A foul man is not a member of the feathered family.

JULIUS G. RINAN, New Mgr.

E. J. BLACK & SONS
Phones 4827—5352

SINGLES AND DOUBLES

Rocky Mountain—Missoula
Irish Sweepstakes—Bozeman
8 Game Marathon—Billings
A. C. M. Sweepstakes—Great Falls
Montana Women's B. A.—Helena. 1939

Follow the Teams — Scores — Tourney — Every Day on the Sports Pages of The Great Falls Tribune — Montana's Best Newsgatherer

If You "Split" From Your Party,
Plan to Meet Them at

JOHNNY'S

To Spend Your "Spare" Time
Black Eagle

REMEMBER THOSE AT HOME

Husbands come and husbands go
But their wives stay home forever.
Husbands laugh and husbands rave
But their wives stay home and have to save.
Husbands gamble, bowl and dance.
But their wives stay home and mend their pants.
Now this, my friends, is a reminder to you,
That before you're broke of some things to do,
Be sure to purchase for that little wife
A broom, a mop or a fine carving knife.
Take the baby home a pair of shoes.
Give the rest of the family, flowers, clothing and rouge.

**You Live
Only Once—**

So enjoy the pleasure of wearing good clothes
By any comparison our clothes are leading
values. You'll like trading at this modern
store for men.

KAUFMAN'S

304 Central

SHOULD ONE BOWL LEFT HANDED

Arguments both for and against left handed bowling are always in evidence. Rather than continue these one should look at the facts and take them for what they say. The port side bowler certainly has the advantage of clean alleys. This is certainly an attraction which should aid their scores. In fact this alone should more than offset any lack of control which is usually associated with them. This wildness might also be questioned for too many good baseball pitchers like Hubbell are port siders and are recognized in part for their fine control. Wrong wheelers like Tebeau of Great Falls and Dr. LaPorte of Missoula along with many others maintain consistently high averages in bowling.

SANDWICHES

ICE CREAM

PETE'S

FOUNTAIN DRINKS
CURB SERVICE

● Society Brand Suits
● Avon Park Suits

● Cheney Cravats
● Van Heusen Shirts

LANDERS
CLOTHING

303 Central

Phone 4276

WESLEY BROWN

Wesley Brown, one of the A. C. M. bowlers and a brother of Gladys McGuire, died of heart trouble unexpectedly on the 27th of March, 1939.

Best Wishes for a
Successful Tournament
Greely Elevator Co.

NEW LOW RATES
NOW IN EFFECT

Inland AIR LINES

3 1/2 c
per mile on round
trips.
Phone 4400 or call
at
AIRLINES
TICKET OFFICE

ANNUAL MEETING

The Board of Directors of the Montana Bowling Association, meeting in regular session, voted that the Annual Meeting should be held in Great Falls on Saturday, April 22nd, and that such meeting be conducted at a banquet. Tickets may be secured at the desk for \$1.00. Every bowler is urged to attend.

Compliments of
HANSEN BROS.
Garage and Service Stations

BOWLERS, HERE'S SOMETHING TO THINK ABOUT

Golf as you know is a game which permits one to throw sticks at a ball rather than to throw a ball at sticks. While unlike bowling in that it is usually played in the open, it is similar in that many good games are played around the fireside. There is one advantage in being a great golfer. Look at Jim Ely who developed from rank amateurism to professionalism within a period of a very few days. One can see that there is opportunity for good bowlers in this game for Jim, once a State Singles Champion, now roves the fairways cloaked in the knowledge of this mystic game of golf. George Toole another of our outstanding bowlers has developed into a pretty good golfer in spite of the fact that he is forced to play without keeping an eye on the ball. This blindness is not a recent development but is brought about by "front porch" which hides the ball when George places it close enough to hit. Some claim that same blindness aided George to bowl his 300 game in 1937; however, sufficient data have not been gathered on this point to prove whether or not such a conclusion is valid.

Compliments of WESTERN NOVELTY CO.

Bruce Dalton — Del Grasseschi
COIN OPERATED MACHINES

BERKNER'S

Central Ave. and 12th St.
We specialize in

Fried chicken dinners.....75c
T-bone steaks50c
Beef-lob steak sandwiches.35c

We make our own ice cream
fresh daily with the latest
equipment for manufacturing
ice cream.

We Invite you to Visit us

We've done our best to show you a good time, so why not surprise your wife by bringing her to visit the North Montana State Fair and Rodeo.

AUGUST 7 to 12

TWO ALL EVENTS RECORDS

High Score—

Vincent Cebuhar	1921.....	1950
Walter Tuss	1937.....	1903
Walter Tuss	1938.....	1287
Who?	1939.....	



Have Your Suit Tailored
to Your Measure

\$22.50 and
up

17 Third Street South

S & B SELF SERVICE

Great Falls Quality Food Market

Phone 7601

3 Deliveries Daily

FOUNTAIN SERVICE

We Specialize in
SALADS AND HOT PLATE LUNCHES
HAMILTON'S REXALL DRUG STORE

CROWN JEWELRY COMPANY

415 Central Ave.

Great Falls

Headquarters for

WATCHES - DIAMONDS - COSTUME JEWELRY

"Northern Montana's Outstanding Jewelry Center"

EAT AT HANK'S HAMBURGER INN

24-Hour Service

No. 2, 127 Central

No. 1, 326 1st Ave. N.

TIRES

TUBES

BATTERIES

You Make the Strikes We'll Furnish the Spares

FIRESTONE AUTO SUPPLY

400 First Ave. N.

GAS & OIL

AUTO SUPPLIES

Compliments

The Brunswick-Balke-Collender Company

Salt Lake City, Utah

MINERALITE BALLS--RED CROWN PINS

Welcome Visiting Bowlers!

Take home a Paris Gift, from Montana's largest gift display. Gifts you will be glad to give, gifts they will be happy to receive.

The Paris FLIGMAN CO.

A store of complete satisfaction in every transaction

The Paris
FLIGMAN CO. A store designed, merchandised, grouped, stocked, staffed and display arrangement from the standpoint of customer's shopping comfort.

The Paris
FLIGMAN CO. A store easy on your eyes, feet ... easy on your nerves ... easy on your purse.

The Paris
FLIGMAN CO. A store complete for Men, Women, Children and the home.

Store Hours 9:30 to 6

You are sure to enjoy every meal at

THE PARIS FOUNTAIN

The delightful eating place

Open 7 A. M. to 8 P. M.

5-Course Dinner
Served 5 to 8 **65c**

Deliciously cooked and expertly served

Breakfast 7 to 11 a. m. 25c to 50c

Luncheons 11 to 2:30 40c

The Paris
FLIGMAN CO.



At All



STATIONS

HOME TIRE CO.

State Distributors

BEST TIRE BUY IN TOWN